

SUPERB +

SCRATCH N' DENT

www.mysuperb.com.au | p 1300 008 188



**** Superb Plus Gives You Free Repairs for 4, 5 Year Memberships and a Reduced Repair Fee of \$29.95 for our 3 Year Memberships.**



Bumper Bar Scratch
or Scrape

Chips or
Deep Scratch

Body Pressure
Dent

Alloy Wheel
Scrapes

Surface
Scratch

Side Mirror
Scratch or Scrape

Windscreen
Chips

Leather
Tears

WHY USE SUPERB

Superb Scratch 'N Dent's vision is to provide a 'Superb' Scratch N Dent membership that is consistently striving to deliver 100% customer satisfaction and trustworthy service to our members 100% of the time.



Save on insurance excess. Most common minor repairs cost less than paying the excess.



Repairs are carried out by industry professionals.



Avoid the impact on your no claim bonus by becoming a Superb member or repairing damage through our non-member services.



No limit on the number of quotes for repair. Door to Door service or fixed locations.



Choosing Superb Scratch 'N Dent is as easy as 1 - 2 - 3. It's a convenient and cost-effective repair solution for every day incidental scratches, scrapes and bumps, that detract from a vehicle's condition.



Low Members Repair Fee. Small cosmetic repairs such as stone chips, painted alloy wheel scratches, panel surface scuffs and scratches, small body pressure dents, bumper bar scratches and side mirror marks, are fixed for a low repair fee during your membership.



Deep panel scratches up to 60mm

Alloy wheel scrape – no size limit

Surface scratches – covering 5 panels

Mirror casing scrapes – no size limits

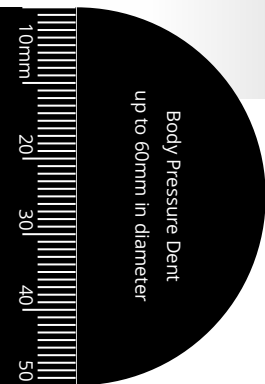
Bumper bar and body kit repairs up to 550mm



MEMBER BENEFITS

****Free Repairs on 4, 5 Year Memberships & Reduced Repair Fee of \$29.95 on 3 Year Memberships.**

*Terms & Conditions Apply.



Key Exclusions

- Chrome Finished and Powder Coated Alloy Wheels
- Replacement Parts
- Structural Damage
- Non Painted Textured Plastic Components
- Damage on your Vehicle Prior to Joining Superb

Price Comparison Guide

Service	Member Price	Panel shop (avg)
Bumper Bar Scrapes	from \$0	\$350 to \$1200
Deep Scratch	from \$0	\$350 to \$1200
Body Kit Scratch	from \$0	\$250 to \$1200
Alloy Wheel Repair	from \$0	\$200 to \$500





MEMBER BENEFITS

"I got the Superb membership when I first bought my car. Happy that I got it since I've scratched it a couple of times and these guys have always fixed it for me. Not bad considering, I paid a one-off membership fee."

Elissa Campbelltown NSW



1 Bumper Bar & Body Kit Scratch or Scrape*

Repair one scratch or scrape up to 550mm in length and 20mm in depth. Excluding lights, metal bumper bars, Chrome finishes, decals and internal structural damage including mounting brackets, damage to lights or headlight covers, damage to any electrical or mechanical mechanism.

*Terms & Conditions Apply.



2 Deep Scratch*

Repair one paint chip or deep scratches down to the metal surface up to 60mm in length on any vertical painted metal panel. (One panel per repair).

*Terms & Conditions Apply.



3 Body Pressure Dent*

Repair one pressure dent up to 60mm in diameter on any flat single panel where the paint has not been chipped or damaged. (excludes dents on style lines and metal folds, edges, corner and dents where there is not sufficient access to rear of panel).

*Terms & Conditions Apply.



4 Painted or Polished Alloy Wheel Scrapes*

Repair one alloy wheel scratch or scrape by repairing damaged area. Excluding chrome finished or powder coated alloy wheels and structural damage to the wheel. We do not guarantee an exact colour match when repainting any alloy wheel.

*Terms & Conditions Apply.



5 Surface Scratch*

Repair surface scratches on up to 5 panels that have not cut through the clear coat.

*Terms & Conditions Apply.



6 Side Mirror Scratch or Scrape*

Repair paint scratches or scuffs on side mirror casing. (excludes chrome finished casings, lights and structural damage). 1 mirror casing per repair.

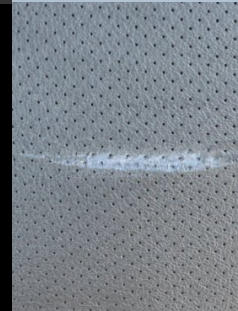
*Terms & Conditions Apply.



7 Windscreen Chips*

Repair up to one stone chip on the front windscreen. The maximum size of each stone chip is 20mm in diameter. These repairs do not include stone chips that render the vehicle unroadworthy. Excludes damage affecting the primary vision of the driver.

*Terms & Conditions Apply.



8 Leather Tear or Scratch*

Repair one tear or scratch in leather and vinyl seats and arm rests up to 80mm in length and 5mm in width (Excludes wear and tear, parted seams, or damage to instrumentation panel, headliner or to steering wheel).

*Terms & Conditions Apply.



Deep panel scratches up to 60mm

Alloy wheel scrape – no size limit

Surface scratches – covering 5 panels

Mirror casing scrapes – no size limits

Bumper bar and body kit repairs up to 550mm



BUMPER BAR & BODY KIT SCRATCH OR SCRAPE

Repair one scratch or scrape up to 550mm in length and 20mm in depth.

Excluding lights, metal bumper bars, chrome finishes, decals and internal structural damage including mounting brackets, damage to lights or headlight covers, damage to any electrical or mechanical mechanism.

BEFORE



AFTER



*Terms & Conditions Apply.



Deep panel scratches up to 60mm

Alloy wheel scrape – no size limit

Surface scratches – covering 5 panels

Mirror casing scrapes – no size limits

Bumper bar and body kit repairs up to 550mm



DEEP SCRATCH

Repair one paint chip or deep scratches down to the metal surface up to 60mm in length on any vertical painted metal panel. (One panel per repair).

BEFORE



AFTER



*Terms & Conditions Apply.



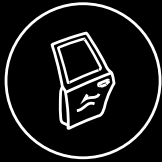
Deep panel scratches up to 60mm

Alloy wheel scrape – no size limit

Surface scratches – covering 5 panels

Mirror casing scrapes – no size limits

Bumper bar and body kit repairs up to 550mm



BODY PRESSURE DENT

Repair one pressure dent up to 60mm in diameter on any flat single panel where the paint has not been chipped or damaged. (excludes dents on style lines and metal folds, edges, corner and dents where there is not sufficient access to rear of panel).

BEFORE

AFTER



*Terms & Conditions Apply.



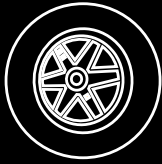
Deep panel scratches up to 60mm

Alloy wheel scrape – no size limit

Surface scratches – covering 5 panels

Mirror casing scrapes – no size limits

Bumper bar and body kit repairs up to 550mm



PAINTED OR POLISHED ALLOY WHEEL SCRAPES

Repair one painted alloy wheel scratch or scrape by repairing damaged area.
Excluding chrome finished or powder coated alloy wheels and structural damage to the wheel.
We do not guarantee an exact colour match when repainting any alloy wheel.

BEFORE



AFTER



*Terms & Conditions Apply.



Deep panel scratches up to 60mm

Alloy wheel scrape - no size limit

Surface scratches - covering 5 panels

Mirror casing scrapes - no size limits

Bumper bar and body kit repairs up to 550mm



SURFACE SCRATCH

Repair surface scratches on up to 5 panels that have not cut through the clear coat.

BEFORE



AFTER



*Terms & Conditions Apply.



Deep panel scratches up to 60mm

Alloy wheel scrape – no size limit

Surface scratches – covering 5 panels

Mirror casing scrapes – no size limits

Bumper bar and body kit repairs up to 550mm



SIDE MIRROR SCRATCH OR SCRAPE

Repair paint scratches or scuffs on side mirror casing. (excludes chrome finished casings, lights and structural damage). 1 mirror casing per repair.

BEFORE



AFTER



*Terms & Conditions Apply.



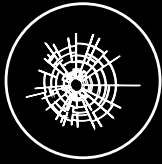
Deep panel scratches up to 60mm

Alloy wheel scrape - no size limit

Surface scratches - covering 5 panels

Mirror casing scrapes - no size limits

Bumper bar and body kit repairs up to 550mm



WINDSCREEN CHIPS

Repair up to one stone chip on the front windscreen. The maximum size of each stone chip is 20mm in diameter. These repairs do not include stone chips that render the vehicle unroadworthy. Excludes damage affecting the primary vision of the driver.

BEFORE



AFTER



*Terms & Conditions Apply.



Deep panel scratches up to 60mm

Alloy wheel scrape – no size limit

Surface scratches – covering 5 panels

Mirror casing scrapes – no size limits

Bumper bar and body kit repairs up to 550mm



LEATHER TEAR OR SCRATCH

Repair one tear or scratch in leather and vinyl seats and arm rests up to 80mm in length and 5mm in width
(Excludes wear and tear, parted seams, or damage to instrumentation panel, headliner or to steering wheel).

BEFORE



AFTER



*Terms & Conditions Apply.



Deep panel scratches up to 60mm

Alloy wheel scrape – no size limit

Surface scratches – covering 5 panels

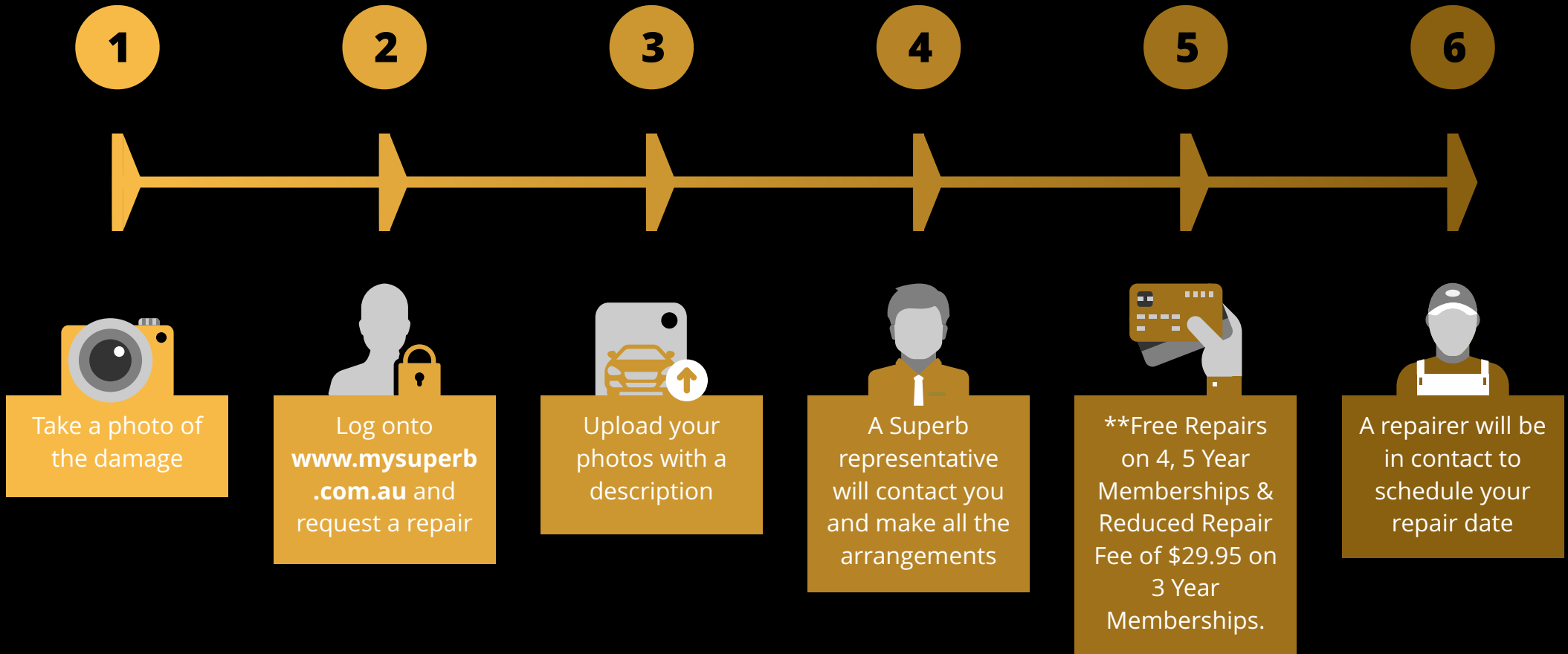
Mirror casing scrapes – no size limits

Bumper bar and body kit repairs up to 550mm



HOW IT WORKS

When an unfortunate scratch or dent occurs; just login to your membership account to request a repair in **6 easy steps!**



FAQ's

How many times can I request a repair?

Passenger vehicles: Unlimited repairs within the membership term*.

When do I pay the repair fee?

Payment of repair fee is required before inspection/quotation and on-site repair.

How long will it take till my request is attended to?

We are required to provide a quote within 14 days from initial contact, Superb is required to complete the repairs within 30 days from the acceptance of the repair quote by the member.

What does the Membership Cover?

The membership will cover your nominated vehicle for repairs to painted alloy wheels, bumper bar, body kits, exterior mirror casings, paint chips, stone chips and deep scratches, that are within the membership terms and conditions.

- Low cost cosmetic repairs for your nominated vehicle
- Access to qualified industry professional repair technicians
- Door to door service or fixed locations

What happens if my repair doesn't fit the criteria?

Superb will provide the member a quote to fix the damage, the member can use the initial payment of the repair fee towards the repair quote or have the initial payment of the repair fee refunded in full to the member if they choose to not to proceed.

What should I be considering when I book a call out?

Check if the repair fits the guidelines provided in the membership terms and conditions, unfortunately we will not repair any damage outside the scope for the agreed repair fee however we are more than happy to provide a quote to repair it at our standard service prices.

What is a service area?

The service area is limited to your postcode address within the greater metropolitan area of Sydney, Melbourne, Adelaide, Brisbane, Canberra and such areas as advised by Superb from time to time**.

Please provide suitable work area around the vehicle, the area we require must be 2 metres wide around the vehicle and within 25 meters from an electrical power point. Also the area needs to be on private property.

*Terms & Conditions Apply.



GIVING YOU PEACE OF MIND

Superb Scratch 'n Dent membership is a very cost effective solution for small cosmetic repairs for daily incidents such as bumper scuffs, small dents and scratches.

Purchasing a new car is easy but keeping it looking pristine requires some assistance. Our team at Superb are committed to providing our members quality repairs with outstanding customer service. Our sole objective is to provide our members with quality service for a small fixed repair fee saving members on repair costs throughout the membership term.

Don't affect your 'no claim bonus', receive the benefits from the team at Superb with a scratch and dent membership!

****Free repairs are subject to our fairplay policy, please see www.mysuperb.com.au/fairplay-policy**

*"Don't affect your '**no claim bonus**', receive the benefits from the team at Superb with a scratch and dent membership!"*





www.mysuperb.com.au

p 1300 008 188

Campbelltown NSW 2560
Australia